



powerhand[®]

VRS 140
BASE MACHINE BUYING GUIDE

SUGGESTED BASE MACHINE SIZE

Excavator:

Approx. **15** Tonnes
Base Weight



Wheeled materials handler:

Approx. **15** Tonnes
Base Weight



BASE MACHINE REQUIREMENTS

- 1 Two hydraulic services down the boom to operate the grapple open / close and rotate - left and right functions (shear / rotate function)

Grab Open / Close
350 Bar + 100-120 litres / minute oil flow.

Grab Rotate
250 Bar + 30 litres / minute oil flow.
Please note: This is not standard and may require the pump on the machine to be changed for a higher output version.



- 2 One hydraulic function required to front of chassis of the machine

Clamp Legs Raise / Lower
350 Bar + 100-120 litres / minute oil flow.

Please note: Excavators with an existing dozer blade will have these requirements. A standard machine with no dozer blade, may require extra services to be installed, consideration should be given to the extra cost of this work when buying a machine. Machines already fitted with the hydraulic services to the undercarriage (i.e. a machine with a blade service) will be simpler (therefore cheaper) to install.



- 3 Unbreakable glass protection (Margard) front window

Please note: This is not standard and will need to be fitted to the machine.

SUGGESTED OPTIMAL MACHINE SPECIFICATION

1



Existing Bulldozer Blade Mounts
(To make installation simpler)

2



Short Dipper Boom & Large dia. Pivot Pins
(Short dipper boom allows greater control of the VRS Grab when operating close in to the machine, Large dia. pivot pins - for strength and longevity)

3



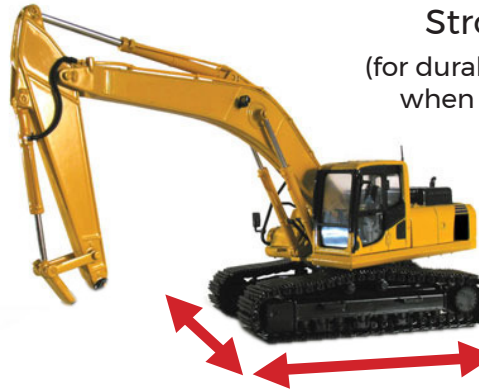
Two-Piece Boom
(Increases rigidity and reduces cost compared to a 3 piece boom)

4



Quick Coupler on End of Boom
Adds Extra Weight
(To be used only if required)

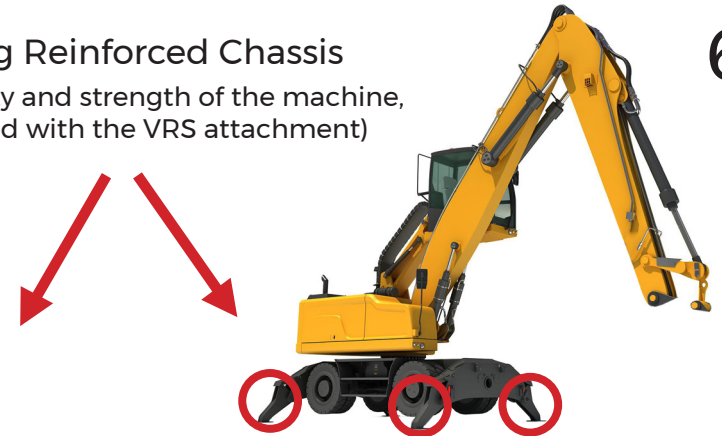
5



Large and Wide Track Frame on Excavators
(For optimal stability)

Strong Reinforced Chassis
(for durability and strength of the machine, when used with the VRS attachment)

6



Outriggers on Materials Handlers
(For optimal stability)

CONTACT INFO FOR TECHNICAL ADVICE

MURRAY CLARK

DIRECTOR

Tel: 01387 860241
Mobile: 07526 743701
murray@powerhand.com
Parkgate | Dumfries | DG1 3NB

SCOTT ROBERTSON

**PRODUCTION
MANAGER**

Tel: 01387 860241
Mobile: 07584 070048
info@powerhand.com
Parkgate | Dumfries | DG1 3NB

Powerhand has no responsibility as to the performance of the excavator's hydraulic system or the structural adequacy for fitting of the VRS.
If there is any doubt the customer should consult the machine manufacturer themselves.

powerhand[®]

WWW.POWERHAND.COM